
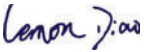



Prüfbericht-Nr.: <i>Test report no.:</i>	CN248DTM 002	Auftrags-Nr.: <i>Order no.:</i>	168562530	Seite 1 von 33 <i>Page 1 of 33</i>
Kunden-Referenz-Nr.: <i>Client reference no.:</i>	2478694	Auftragsdatum: <i>Order date:</i>	2025-07-02	
Auftraggeber: <i>Client:</i>	Discover Energy Systems corp. 320 - 13711 International Place, Richmond, B.C., V6V 2Z8, Canada			
Prüfgegenstand: <i>Test item:</i>	Rechargeable Li-ion battery			
Bezeichnung / Typ-Nr.: <i>Identification / Type no.:</i>	1) 900-0077; 2) 52-48-16000			
Auftrags-Inhalt: <i>Order content:</i>	Test report			
Prüfgrundlage: <i>Test specification:</i>	ANSI/CAN/UL 9540A:2019 (Fourth Edition)			
Wareneingangsdatum: <i>Date of sample receipt:</i>	2024-11-06			
Prüfmuster-Nr.: <i>Test sample no.:</i>	24W45A55-01			
Prüfzeitraum: <i>Testing period:</i>	2024-11-06 - 2024-11-08			
Ort der Prüfung: <i>Place of testing:</i>	TÜV Rheinland (Shenzhen) Co., Ltd.			
Prüflaboratorium: <i>Testing laboratory:</i>	TÜV Rheinland (Shenzhen) Co., Ltd.			
Prüfergebnis*: <i>Test result*:</i>	See main report			
geprüft von: <i>tested by:</i>	 Lemon Diao	genehmigt von: <i>authorized by:</i>	 Xun Yu	
Datum: <i>Date:</i>	2025-07-30	Ausstellungsdatum: <i>Issue date:</i>	2025-07-30	
Stellung / Position:	Sachverständige(r)/Expert	Stellung / Position:	Sachverständige(r)/Expert	
Sonstiges / <i>Other:</i>	<p>The test data are copy from report No. CN248DTM 001, issued by TUV RH, as these changes do not affect the test after the evaluation, detail see page 5.</p> <p>This report does not evidence compliance of the provided sample with the relevant standards but only with the referred tests. This test report documents the findings of examination conducted on the delivered product mentioned above only.</p> <p>This report does not entitle the applicant to carry any safety mark on this or similar products. Further for sales or other application purposes of the tested product, any reference to TÜV Rheinland or a test through TÜV Rheinland is only permissible with prior written consent of TÜV Rheinland.</p>			
Zustand des Prüfgegenstandes bei Anlieferung: <i>Condition of the test item at delivery:</i>	Prüfmuster vollständig und unbeschädigt <i>Test item complete and undamaged</i>			
* Legende:	P(ass) = entspricht o.g. Prüfgrundlage(n)	F(ail) = entspricht nicht o.g. Prüfgrundlage(n)	N/A = nicht anwendbar	N/T = nicht getestet
* Legend:	P(ass) = passed a.m. test specification(s)	F(ail) = failed a.m. test specification(s)	N/A = not applicable	N/T = not tested
<p>Dieser Prüfbericht bezieht sich nur auf das o.g. Prüfmuster und darf ohne Genehmigung der Prüfstelle nicht auszugsweise vervielfältigt werden. Dieser Bericht berechtigt nicht zur Verwendung eines Prüfzeichens. <i>This test report only relates to the above mentioned test sample. Without permission of the test center this test report is not permitted to be duplicated in extracts. This test report does not entitle to carry any test mark.</i></p>				

Prüfbericht-Nr.: CN248DTM 002
Test report no.:

Seite 2 von 33
Page 2 of 33

Anmerkungen
Remarks

1	<p>Alle eingesetzten Prüfmittel waren zum angegebenen Prüfzeitraum gemäß eines festgelegten Kalibrierungsprogramms unseres Prüfhauses kalibriert. Sie entsprechen den in den Prüfprogrammen hinterlegten Anforderungen. Die Rückverfolgbarkeit der eingesetzten Prüfmittel ist durch die Einhaltung der Regelungen unseres Managementsystems gegeben. Detaillierte Informationen bezüglich Prüfkonditionen, Prüfequipment und Messunsicherheiten sind im Prüflabor vorhanden und können auf Wunsch bereitgestellt werden.</p> <p><i>The equipment used during the specified testing period was calibrated according to our test laboratory calibration program. The equipment fulfils the requirements included in the relevant standards. The traceability of the test equipment used is ensured by compliance with the regulations of our management system. Detailed information regarding test conditions, equipment and measurement uncertainty is available in the test laboratory and could be provided on request.</i></p>
2	<p>Wie vertraglich vereinbart, wurde dieses Dokument nur digital unterzeichnet. Der TÜV Rheinland hat nicht überprüft, welche rechtlichen oder sonstigen diesbezüglichen Anforderungen für dieses Dokument gelten. Diese Überprüfung liegt in der Verantwortung des Benutzers dieses Dokuments. Auf Verlangen des Kunden kann der TÜV Rheinland die Gültigkeit der digitalen Signatur durch ein gesondertes Dokument bestätigen. Diese Anfrage ist an unseren Vertrieb zu richten. Eine Umweltgebühr für einen solchen zusätzlichen Service wird erhoben. Informationen zur Verifizierung der Authentizität unserer Dokumente erhalten Sie auf folgender Webseite: go.tuv.com/digital-signature</p> <p><i>As contractually agreed, this document has been signed digitally only. TUV Rheinland has not verified and unable to verify which legal or other pertaining requirements are applicable for this document. Such verification is within the responsibility of the user of this document. Upon request by its client, TUV Rheinland can confirm the validity of the digital signature by a separate document. Such request shall be addressed to our Sales department. An environmental fee for such additional service will be charged. For information on verifying the authenticity of our documents, please visit the following website: go.tuv.com/digital-signature</i></p>
3	<p>Prüfklausel mit der Note * wurden an qualifizierte Unterauftragnehmer vergeben und sind unter der jeweiligen Prüfklausel des Berichts beschrieben. Abweichungen von Prüfspezifikation(en) oder Kundenanforderungen sind in der jeweiligen Prüfklausel im Bericht aufgeführt.</p> <p><i>Test clauses with remark of * are subcontracted to qualified subcontractors and described under the respective test clause in the report.</i> <i>Deviations of testing specification(s) or customer requirements are listed in specific test clause in the report.</i></p>
4	<p>Die Entscheidungsregel für Konformitätserklärungen basierend auf numerischen Messergebnissen in diesem Prüfbericht basiert auf der "Null-Grenzwert-Regel" und der "Einfachen Akzeptanz" gemäß ILAC G8:2019 und IEC Guide 115:2021, es sei denn, in der auf Seite 1 dieses Berichts genannten angewandten Norm ist etwas anderes festgelegt oder vom Kunden gewünscht. Dies bedeutet, dass die Messunsicherheit nicht berücksichtigt wird und daher auch nicht im Prüfbericht angegeben wird. Zu weiteren Informationen bezüglich des Risikos durch diese Entscheidungsregel siehe ILAC G8:2019.</p> <p><i>The decision rule for statements of conformity, based on numerical measurement results, in this test report is based on the "Zero Guard Band Rule" and "Simple Acceptance" in accordance with ILAC G8:2019 and IEC Guide 115:2021, unless otherwise specified in the applied standard mentioned on Page 1 of this report or requested by the customer. This means that measurement uncertainty is not taken in account and hence also not declared in the test report. For additional information to the resulting risk based of this decision rule please refer to ILAC G8:2019.</i></p>

INTRODUCTION

Model fire codes and energy storage system standards require energy storage systems to comply with UL 9540, which in turn requires battery cells and modules to comply with UL 1973. Compliance with these standards reduces the risk of batteries and battery energy storage systems (BESS) creating fire, shock or personal injury hazards. However, they don't evaluate the ability of the BESS installed as intended and with fire suppression mechanisms in place if necessary, from contributing to a fire or explosion in the end use installations.

To address these fire and explosion hazards associated with the installation of a BESS, the fire and other codes require energy storage systems to meet certain location, separation, fire suppression and other criteria. Those codes also provide a means to provide an equivalent level of safety based on large scale fire testing of anticipated BESS installations.

UL 9540A is intended to provide a test method that can be used as a basis for validating the safety of a BESS installation in lieu of meeting the specific criteria provided in those codes. The data generated can be used to determine the fire and explosion protection required for installation of a BESS.

The test method is initiated through the establishment of a thermal runaway condition that leads to combustion within the BESS. The test method outlined in UL 9540A consists of several steps – cell level testing, module level testing, unit level testing and installation level testing. The cell and module level testing steps are information gathering steps to inform the unit and installation level testing.

The following outlines the information that may gathered as part of the testing:

- a) Cell level – An individual cell fails in a manner that leads to thermal runaway and fire through a suitable method such as external heating. Data such as off-gassing contents, temperatures at venting and temperatures at thermal runaway are recorded.
- b) Module level – One or more cells within a BESS module fail in the manner determined during the cell level testing. Data such as fire propagation in the module, temperatures on the failed cells and surrounding cells, off-gassing contents and heat release data are gathered.
- c) Unit level – A complete BESS is installed surrounded by target (e.g. dummy) BESS and walls separated at a distance as intended in its installation. The module level test is repeated on a module located in the BESS in the most unfavorable location. Data such as temperature within the BESS, on surrounding walls and target BESS; incident heat flux on walls and target BESS; observation of fire propagation from BESS to target units and walls as well as observance of explosions or evidence of re-ignition within the BESS; and heat release and off-gassing contents are gathered.
- d) Installation level – This test is a repeat of the unit level test with the test conducted within a test room and with the intended fire suppression system installed as well as any overhead cables (that can lead to fire propagation) installed. This test is intended to validate the fire suppression system for the BESS installation. Data such as temperature within the BESS, on surrounding walls and target BESS; incident heat flux on walls and target BESS; fire propagation from the BESS to target units, walls or overhead cables and any observable explosion incidents or re-ignition within the BESS; and off-gassing contents (if needed) and heat release are gathered.

Contents

1	GENERAL INFORMATION	5
1.1	TEST SPECIFICATION	5
1.2	GENERAL REMARKS.....	5
1.3	REVISION INFORMATION	5
1.4	SUMMARY OF THE TEST.....	6
1.5	DEFINITIONS	7
2	GENERAL PRODUCT INFORMATION.....	8
2.1	CELL	8
2.1.1	<i>Product information and parameters</i>	8
2.1.2	<i>Cell level test information</i>	8
2.2	MODULE.....	9
2.2.1	<i>Product information and parameters</i>	9
2.2.2	<i>Diagram with overall dimension</i>	10
3	MODULE LEVEL TEST (SECTION 8 OF UL 9540A).....	10
3.1	GENERAL	10
3.2	SAMPLE PREPARATION.....	11
3.3	MODULE LEVEL THERMAL RUNAWAY TEST.....	12
3.3.1	<i>Thermal runaway test method description</i>	12
3.3.2	<i>Observations and records</i>	13
3.3.3	<i>Temperature measurements</i>	15
3.4	CHEMICAL HEAT RELEASE RATE MEASUREMENT	16
3.4.1	<i>Test method</i>	16
3.4.2	<i>Test result</i>	18
3.5	SMOKE RELEASE RATE MEASUREMENT.....	18
3.5.1	<i>Test method</i>	18
3.5.2	<i>Test result</i>	19
3.6	GAS GENERATION MEASUREMENT	21
3.6.1	<i>Test method</i>	21
3.6.2	<i>Total gas release</i>	21
3.6.3	<i>Gas components</i>	21
3.7	PHOTOS	26

Prüfbericht-Nr.: CN248DTM 002
Test report no.:

Seite 5 von 33
Page 5 of 33

1 General information

1.1 Test specification

Standard: ANSI/CAN/UL 9540A: 2019 (Fourth Edition)

Test Method for Evaluating Thermal Runaway Fire Propagation in Battery Energy Storage Systems

This report presents the result of module level tests of UL 9540A: 2019.

All tests were conducted at TUV Rheinland (Shenzhen) Co., Ltd. and TUV Rheinland's partner labs that were under supervision of TÜV Rheinland's engineer.

Testing period: 2024-11-06 to 2024-11-08

Refer to Clause 4 for test and measurement instruments.

1.2 General remarks

This report is descriptive and provide the test data only.

The test results presented in this report relate only to the object tested.

This report shall not be reproduced, except in full, without the written approval of the testing laboratory.

Throughout this report a comma / point is used as the decimal separator.

1.3 Revision information

Description of changes:

1. Update the battery external structure, detail see page 10.
 - 1) Delete the display screen.
 - 2) Move the start button to the other side of the enclosures.
 - 3) Change the bottom mat.
 - 4) Add a screw hole on the surface of the enclosures.
2. Add an alternate model number 52-48-16000, detail see page 1 and 9.

Change	Testing	Comment
1, 2	N/A	No additional test necessary.

History of amendments and modifications:

Ref. No. CN248DTM 001, dated 2024-12-09 (original test report)

Ref. No. CN248DTM 002, dated 2025-07-30 (1st amendment)

Prüfbericht-Nr.: CN248DTM 002
Test report no.:

Seite 6 von 33
Page 6 of 33

1.4 Summary of the test

Video records of the test from 2 directions were provided in .mp4 format.

One external heater was placed in the module to initiate the thermal runaway inside the module. The initiating cells were heated at a rate of 4°C to 7°C per minute until the cell thermal runaway.

White smoke was observed during the test. No flying debris or explosive discharge of gases during the test. No sparks, electrical arcs, or other electrical events during the test. No external flaming observed.

The battery pack weight measured was 134.8kg (before test) and 130.7kg (after test).

Measured peak chemical heat release rate HRR was 20.278KW.

Measured total heat release through the test THR was 5.021MJ.

Measured peak smoke release rate SRR was 2.140m²/s

Total smoke release TSR was 251.636m²

Total hydrocarbons gas (equivalent to CH₄, measured by FID) was 233.0L.

Detail information see relevant clause of this report.

1.5 Definitions

CELL – The basic functional electrochemical unit containing an assembly of electrodes, electrolyte, separators, container, and terminals. It is a source of electrical energy by direct conversion of chemical energy.

MODULE – A subassembly that is a component of a BESS that consists of a group of cells or electrochemical capacitors connected together either in a series and/or parallel configuration (sometimes referred to as a block) with or without protective devices and monitoring circuitry.

UNIT – A frame, rack or enclosure that consists of a functional BESS which includes components and subassemblies such as cells, modules, battery management systems, ventilation devices and other ancillary equipment.

BATTERY SYSTEM (BS) – Is a component of a BESS and consists of one or more modules typically in a rack configuration, controls such as the BMS and components that make up the system such as cooling systems, disconnects and protection devices.

BATTERY ENERGY STORAGE SYSTEM (BESS) – Stationary equipment that receives electrical energy and then utilizes batteries to store that energy to supply electrical energy at some future time. The BESS, at a minimum consists of one or more modules, a power conditioning system (PCS), battery management system (BMS) and balance of plant components.

a) INITIATING BATTERY ENERGY STORAGE SYSTEM UNIT (INITIATING BESS) – A BESS unit which has been equipped with resistance heaters in order to create the internal fire condition necessary for the installation level test.

b) TARGET BATTERY ENERGY STORAGE SYSTEM UNIT (TARGET BESS) – The enclosure and/or rack hardware that physically supports and/or contains the components that comprise a BESS. The target BESS unit does not contain energy storage components, but serves to enable instrumentation to measure the thermal exposure from the initiating BESS.

Note: Depending upon the configuration and design of the BESS (e.g. the BESS is composed of multiple separate parts within separate enclosures), the unit level test can be done at battery system level. In such case, the BESS is be read as BS throughout this report.

NON-RESIDENTIAL USE – Intended for use in commercial, industrial or utility owned locations.

RESIDENTIAL USE – In accordance with this standard, intended for use in one or two family homes and town homes and individual dwelling units of multi-family dwellings.

THERMAL RUNAWAY- The incident when an electrochemical cell increases its temperature through self-heating in an uncontrollable fashion. The thermal runaway progresses when the cell's generation of heat is at a higher rate than the heat it can dissipate. This may lead to fire, explosion and gas evolution.

STATE OF CHARGE (SOC) – The available capacity in a BESS, pack, module or cell expressed as a percentage of rated capacity.

2.2 Module

2.2.1 Product information and parameters

The product information and parameters are provided by the client as below.

Manufacturer plant:	[REDACTED]	
Model number:	1) 900-0077; 2) 52-48-16000	
Physical configuration:	Metal enclosure	
	Weight:	Approx. 137.6kg
	Cells in series/parallel:	1P16S
Cooling method:	Air cooling	
Separation between cells:	-	
Electrical rating:	Rated capacity:	314 Ah
	Nominal voltage:	51.2 Vdc
Standard charge method:	Charge Current:	157A
	End of charge:	The highest voltage reaches 55.2V
Standard discharge method:	Discharge Current:	157A
	End of discharge:	The lowest voltage reaches 48 V
Compliance with UL 1973:	<input type="checkbox"/> Yes	<input checked="" type="checkbox"/> No

2.2.2 Diagram with overall dimension

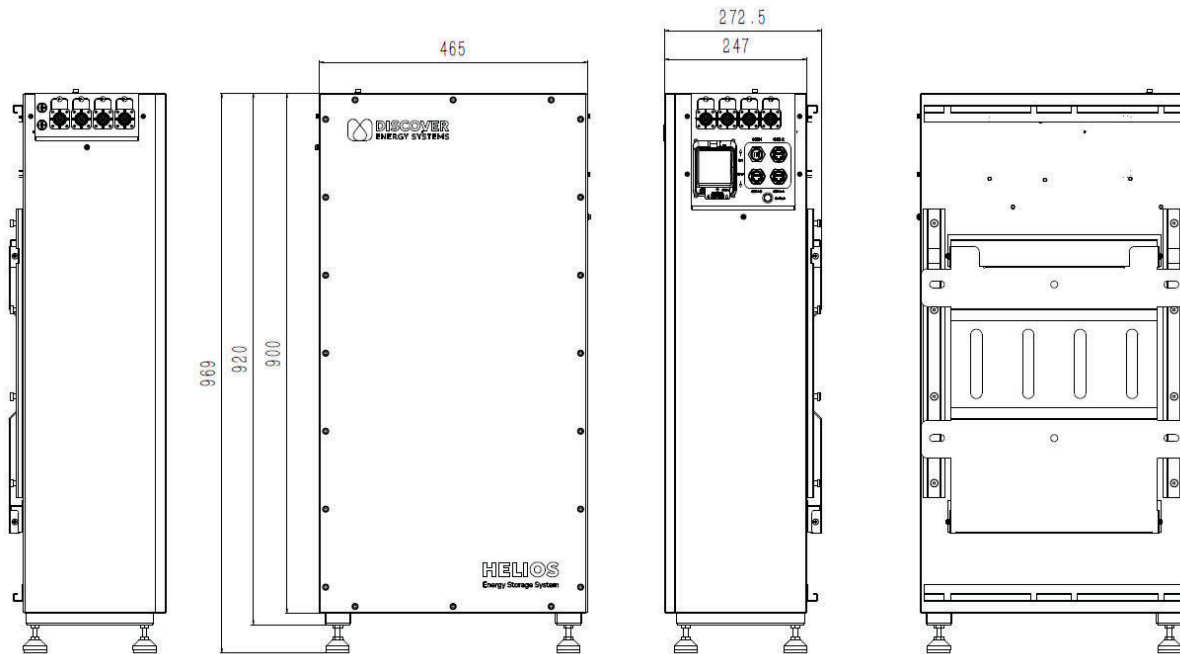


Figure 1. Diagram with overall dimension (Unit: mm)

3 Module level test (section 8 of UL 9540A)

3.1 General

This testing is conducted on battery modules, which are in turn installed in an enclosure or in an open rack system to form a BESS unit.

This test uses applied stresses determined during the cell level test to force a selected number of battery cells within the module into thermal runaway. If there is fire that results from the cell being driven into thermal runaway, the fire is allowed to progress within the module.

The test measures the chemical heat release rate, smoke release rate, maximum temperature, and vent gas composition; and documents the module enclosure integrity after the test, any explosions or hazardous ejection of parts outside of the module enclosure, and the extent and duration of any flame propagation outside of the module.

The module level testing establishes a base line fire test performance that can be evaluated against the fire performance of other battery modules the BESS manufacturer may choose to use within the system. Testing can be discontinued after the module level testing if the effects of thermal runaway (fire and explosion) are contained by the module design and the cell vent gas (as determined by the cell level testing) is non-flammable.

3.2 Sample preparation

Module sample was conditioned, prior to testing, through charge and discharge cycles of 2 cycles to verify that the module was functional.

Each cycle was defined as a charge to 100% SOC and allowed to rest several minutes and then discharged to an end of discharge voltage (EODV) determined by the manufacturer. Refer to 2.2.1 for charge and discharge profile.

The module sample was put in a climate chamber during charge and discharge. The ambient is kept at $25^{\circ}\text{C}\pm 5^{\circ}\text{C}$ and $50\%\pm 25\%$ R.H.

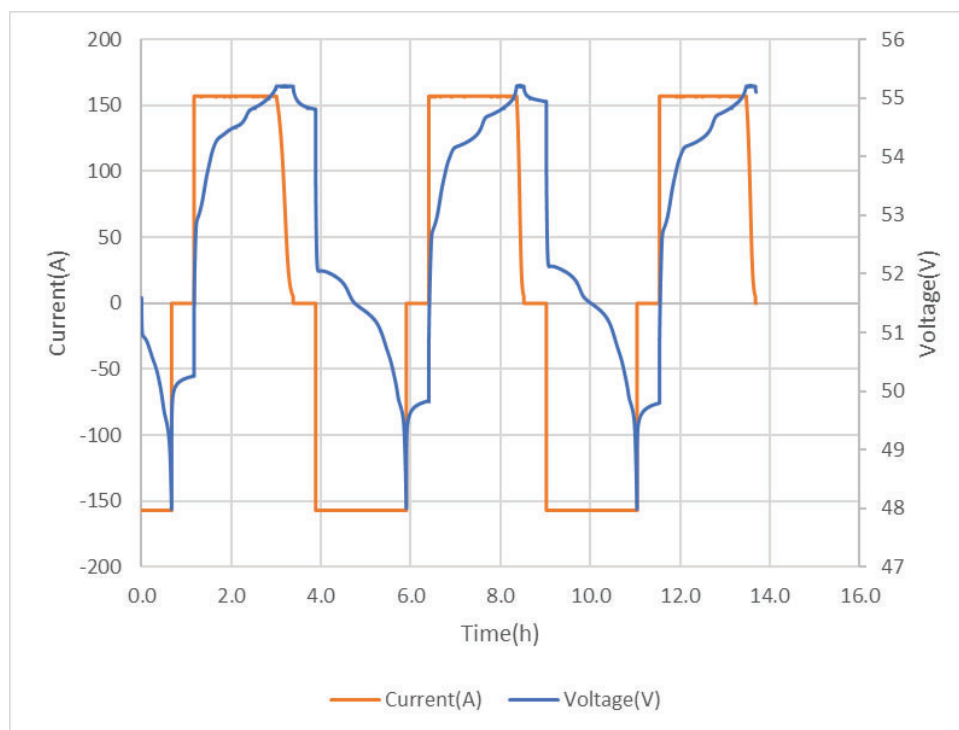


Figure 2. Sample cycling curve

3.3 Module level thermal runaway test

3.3.1 Thermal runaway test method description

The module to be tested was charged to 100% SOC and allow stabilizing for a minimum of 1 h and a maximum of 8 h before the start of the test.

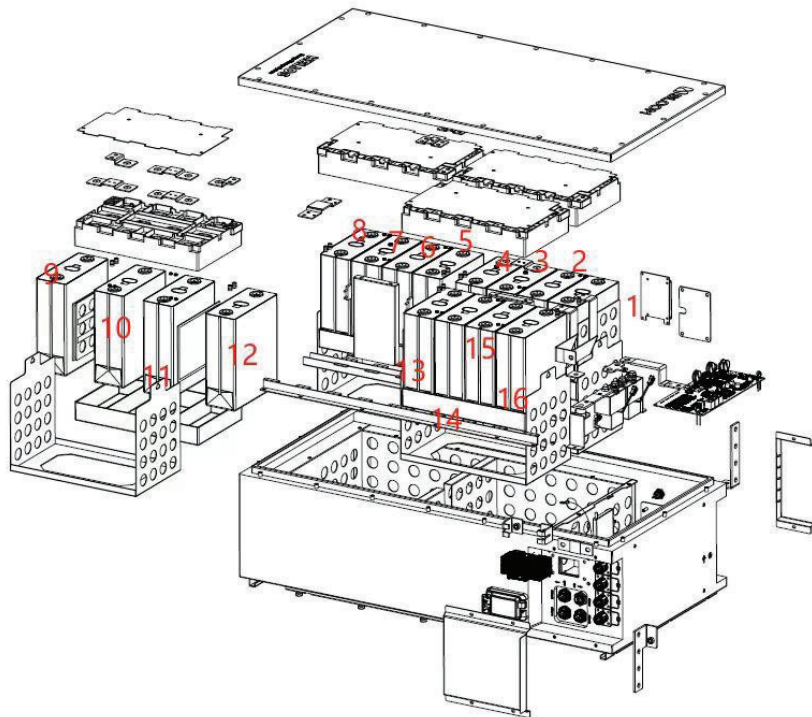
The module consisted of 16 cells (1P16S). All cells in the pack were numbered from #1 to #16 as below.

External heating method was used to initiate thermal runaway in the module. One PET heater, rated 220V ac/1000 W, size 160 x 200 x 0.34 mm, was fitted on cell.

1 PTFE insulated thermocouples, Type K, 24AWG, were attached between the cells and under the heating surface. See Figure 3 and Figure 4 for the detail locations.

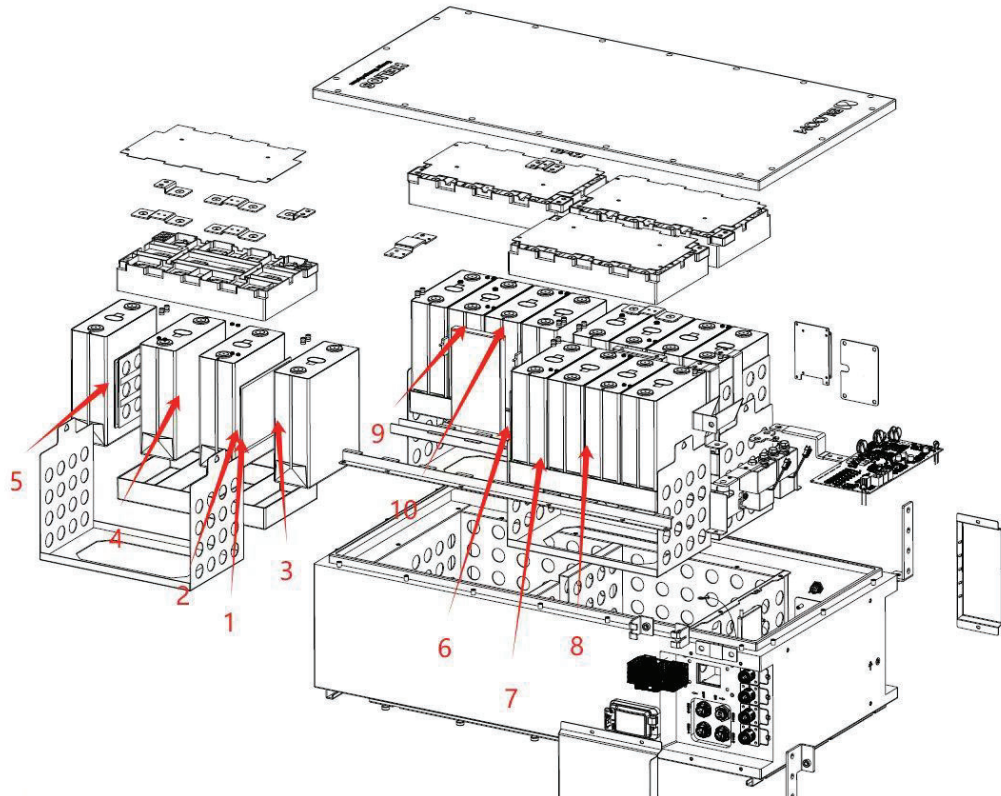
Voltage of the module was monitored during test.

Figure 3 and Figure 4 Cell numbering, heater location and thermocouples locations.



Remark: The number 1~16 means Cell #1~#16 distributed in modules.

Figure 3. Internal view of module



Remark: The number 1~10 means Thermocouple no. T1~T10 distributed in modules.

Figure 4. Location of thermocouple

A PID controller was used to control the voltage supply to the heater and maintain a 4°C/min to 7°C/min heating rate. Additional one thermocouple on the center of initiating cell surface below heater was used to feedback the cell surface temperature to the controller.

The initiating cells were heated at a rate of 4°C to 7°C per minute until the cell thermal runaway. Once the measured temperature exceed the set heating rate, the heaters were immediately de-energized.

3.3.2 Observations and records

Ambient conditions at the initiation of the test .:	25.6°C, 73.0% R.H.
Sample number :	24W45A55-01
Open circuit voltage before test (V) :	54.61
Weight before test (kg) :	134.8
Time initiating the test :	2024-11-07 19:00:29

Prüfbericht-Nr.: CN248DTM 002
Test report no.:

Seite 14 von 33
Page 14 of 33

Observations during test	:	The first thermal runaway cell (#11) and smoke release at 19:59. Then stop heating. The second thermal runaway cell (#12) at 19:59. The third thermal runaway cell (#10) at 20:04. The fourth thermal runaway cell (#09) at 20:42. No flying debris or explosive discharge of gases during test. No sparks, electrical arcs, or other electrical events during test. No external flaming observe.
Posttest evaluation	:	Four cells (#11, #12, #10, #09) went into thermal runaway during test. Three cells (#12, #10, #09) were into thermal runaway by cell to cell propagation.
Open circuit voltage after test (V)	:	40.22
Weight after test (kg)	:	130.7
Weight loss (kg)	:	4.1

3.3.3 Temperature measurements

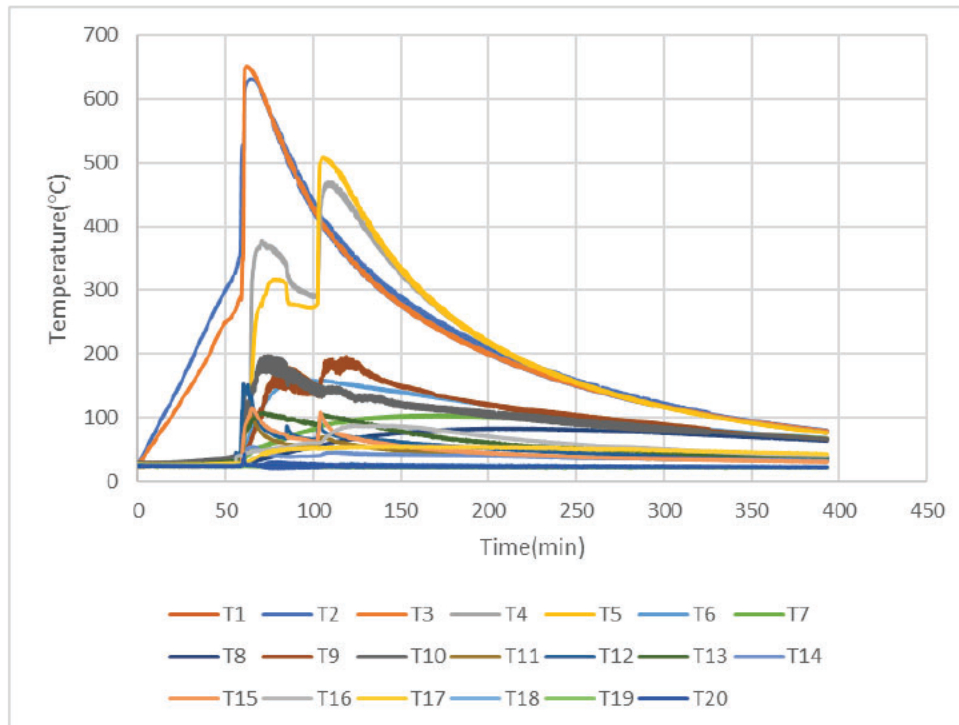


Figure 5. The temperatures curve

Thermocouple no.	Location	Maximum temp. °C
T1	Between cell_11 and Heater	492.0
T2	Right surface of cell_15	324.3
T3	Left surface of cell_14	406.2
T4	Left surface of cell_10	314.5
T5	Right surface of cell_11	372.3
T6	Right surface of cell_07	78.9
T7	Right surface of cell_12	90.0
T8	Left surface of cell_03	59.3
T9	Left surface of the internal Enclosure	128.1
T10	Top surface of the internal Enclosure	363.3
T11	Back surface of the internal Enclosure	130.4
T12	Front surface of the Enclosure	38.7
T13	Back surface of the Enclosure	73.9
T14	Left surface of the Enclosure	82.1
T15	Right surface of the Enclosure	49.1
T16	Top surface of the Enclosure	100.4

Prüfbericht-Nr.: CN248DTM 002
Test report no.:

Seite 16 von 33
Page 16 of 33

T17	Bottom surface of the Enclosure	62.9
T18	Ambient temperature	28.7

Voltage no.	Name	Voltage
V1	Voltage of Module	54.61 V to 40.22 V
V2	Voltage variety of cell 11	3.400 V to 0 V
V3	Voltage variety of cell 12	3.442 V to 0 V
V4	Voltage variety of cell 10	3.403 V to 0 V
V5	Voltage variety of cell 09	3.502 V to 0 V
V6	Voltage variety of cell 13	3.375 V to 3.331 V

3.4 Chemical heat release rate measurement

3.4.1 Test method

The chemical heat release rates were measured by an oxygen consumption calorimeter measurement system consisting of a paramagnetic oxygen analyzer, non-dispersive infrared carbon dioxide and carbon monoxide analyzer, velocity probe, and a Type K thermocouple.

The instrumentations are located in the exhaust duct of the heat release rate calorimeter.

The chemical heat release rate was calculated at each of the flows as follows:

$$HRR_1 = \left[E \times \varphi - (E_{CO} - E) \times \frac{1 - \varphi}{2} \times \frac{X_{CO}}{X_{O_2}} \right] \times \frac{\dot{m}_e}{1 + \varphi \times (\alpha - 1)} \times \frac{M_{O_2}}{M_a} \times (1 - X_{H_2O}^o) \times X_{O_2}^o$$

In which:

HRR_t = total heat release rate, as a function of time (kW)

E = Net heat released for complete combustion per unit of oxygen consumed (adjusted for oxygen contained within cell chemistry, 13,100 kJ/kg)

E_{CO} = Net heat released for complete combustion per unit of oxygen consumed, for CO (adjusted for oxygen contained within cell chemistry, 17,600 kJ/kg)

φ = Oxygen depletion factor (non-dimensional), where:

$$\varphi = \frac{X_{O_2}^o \times [1 - X_{CO_2} - X_{CO}] - X_{O_2} \times [1 - X_{CO_2}^o]}{X_{O_2}^o \times [1 - X_{O_2} - X_{CO_2} - X_{CO}]}$$

X_{CO} = Measured mole fraction of CO in exhaust flow (non-dimensional)

X_{CO_2} = Measured mole fraction of CO₂ in exhaust flow (non-dimensional)

$X_{CO_2}^o$ = Measured mole fraction of CO₂ in incoming air (non-dimensional)

$X_{H_2O}^o$ = Measured mole fraction of H₂O in incoming air (non-dimensional)

X_{O_2} = Measured mole fraction of O₂ in exhaust flow (non-dimensional)

$X_{O_2}^o$ = Measured mole fraction of O₂ in incoming air (non-dimensional)

α = Combustion expansion factor (non-dimensional; normally a value of 1.105)

M_a = Molecular weight of incoming and exhaust air (29 kg/kmol)

M_{O_2} = Molecular weight of oxygen (32 kg/kmol)

\dot{m}_e = Mass flow rate in exhaust duct (kg/s), in which:

$$\dot{m}_e = C \times \sqrt{\frac{\Delta p}{T_e}}$$

or

$$\dot{m}_e = 26.54 \times \frac{A \times k_c}{f(Re)} \times \sqrt{\frac{\Delta p}{T_e}}$$

C = Orifice plate coefficient (in kg^{1/2}m^{1/2}K^{1/2})

Δp = Pressure drop across orifice plate or bidirectional probe (Pa)

T_e = Combustion gas temperature at orifice plate or bidirectional probe (K)

A = Cross sectional area of the duct (m²)

k_c = Velocity profile shape factor (non-dimensional)

$f(Re)$ = Reynolds number correction (non-dimensional)

3.4.2 Test result

Peak chemical heat release rate HRR: 20.278KW

Total heat release through the test THR: 5.021MJ

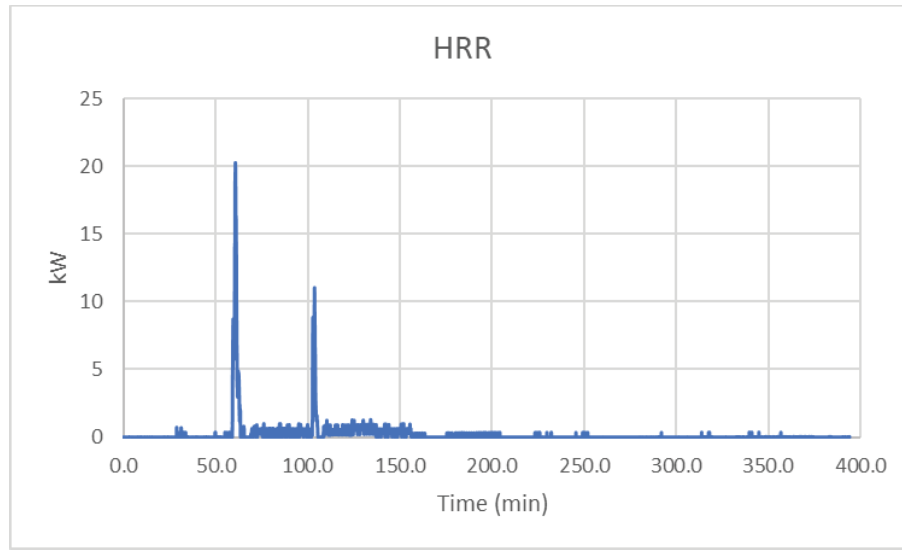


Figure 6. HRR curve

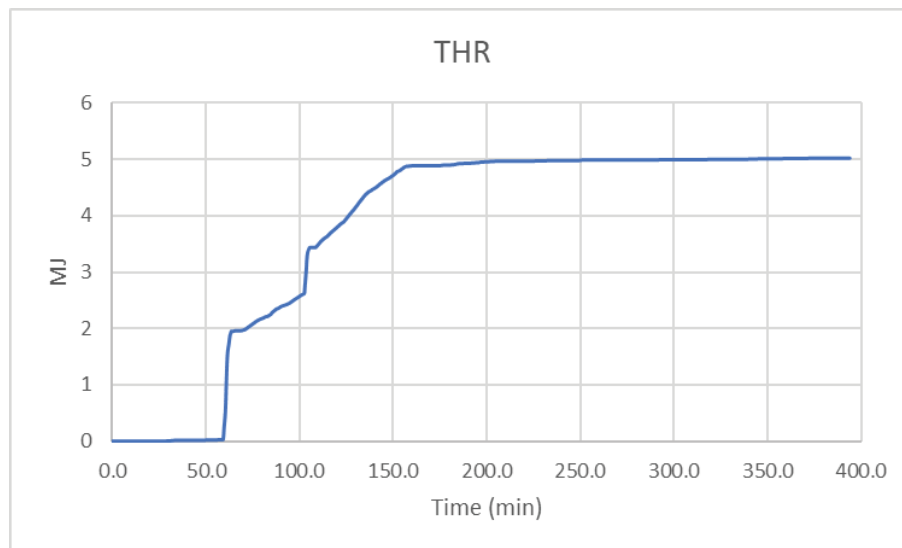


Figure 7. THR curve

3.5 Smoke release rate measurement

3.5.1 Test method

The light transmission in the calorimeter's exhaust duct was measured using a white light source and photo detector for the duration of the test.

The smoke release rate was calculated as follows:

$$SRR = 2.303 \left(\frac{V}{D} \right) \text{Log}_{10} \left(\frac{I_o}{I} \right)$$

Where:

SRR = Smoke release rate (m^2/s)

V = Volumetric exhaust duct flow rate (m^3/s)

D = duct diameter (m)

I_o = Light transmission signal of clear (pre-test) beam (V)

I = Light transmission signal during test (V)

The whole smoke release rate measurement system were self-checked using calibrated light filter before test.

3.5.2 Test result

Peak smoke release rate SRR: $2.140 \text{m}^2/\text{s}$

Total smoke release TSR: 251.636m^2

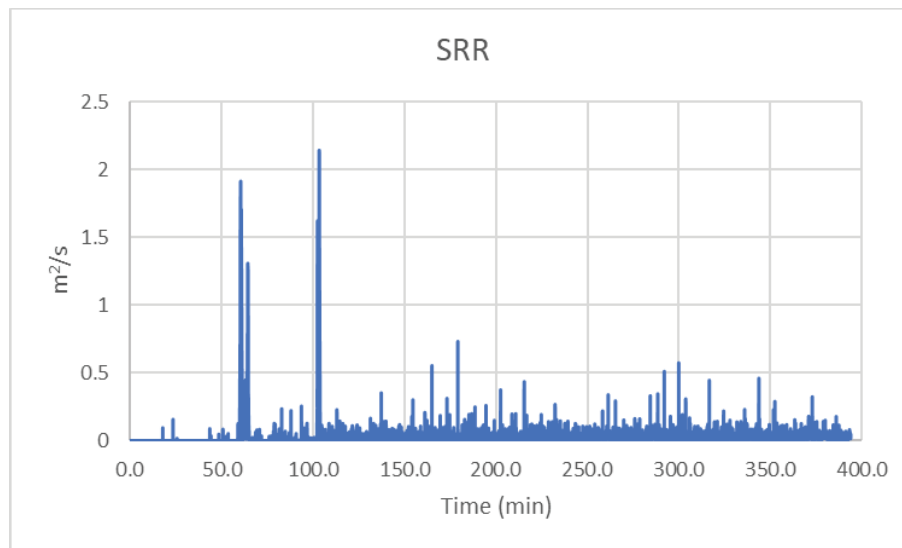


Figure 8. SRR curve

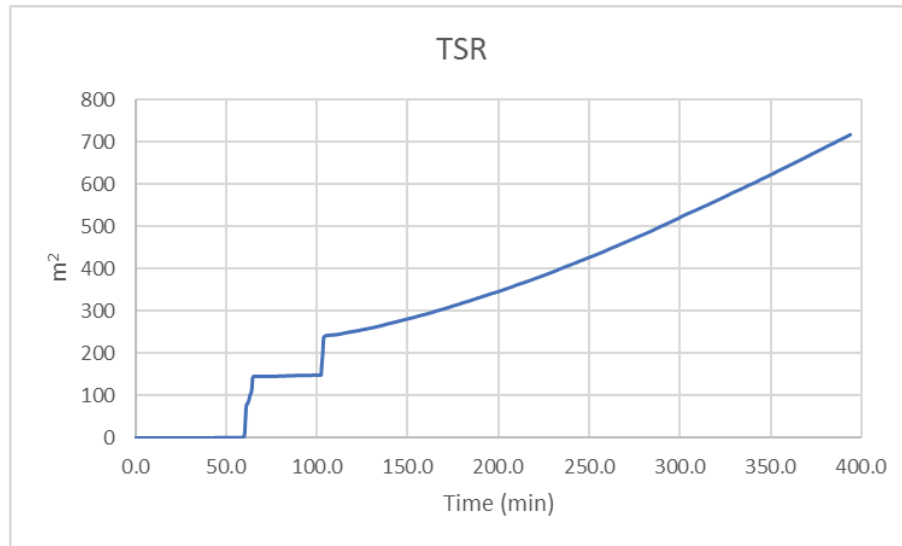


Figure 9. TSR curve

Remark: The TSR collection time is the first 120 minutes; total smoke release is 251.636m².

Prüfbericht-Nr.: CN248DTM 002
Test report no.:

Seite 21 von 33
Page 21 of 33

3.6 Gas generation measurement

3.6.1 Test method

The composition, velocity and temperature of the vent gases were measured within the calorimeter's exhaust duct.

Gas composition were measured using a Fourier-Transform Infrared Spectrometer with a resolution of 1 cm^{-1} and a path length of 5 m within the calorimeter's exhaust duct.

The hydrocarbon content of the vent gas was measured using flame ionization detection.

Hydrogen gas was measured with a palladium-nickel thin-film solid state sensor.

Composition, velocity and temperature instrumentation were collocated with heat release rate calorimetry instrumentation.

3.6.2 Total gas release

The flow rates of various gases were integrated over the test duration and the total cumulative volume of gas calculated for the total test duration were presented in below table.

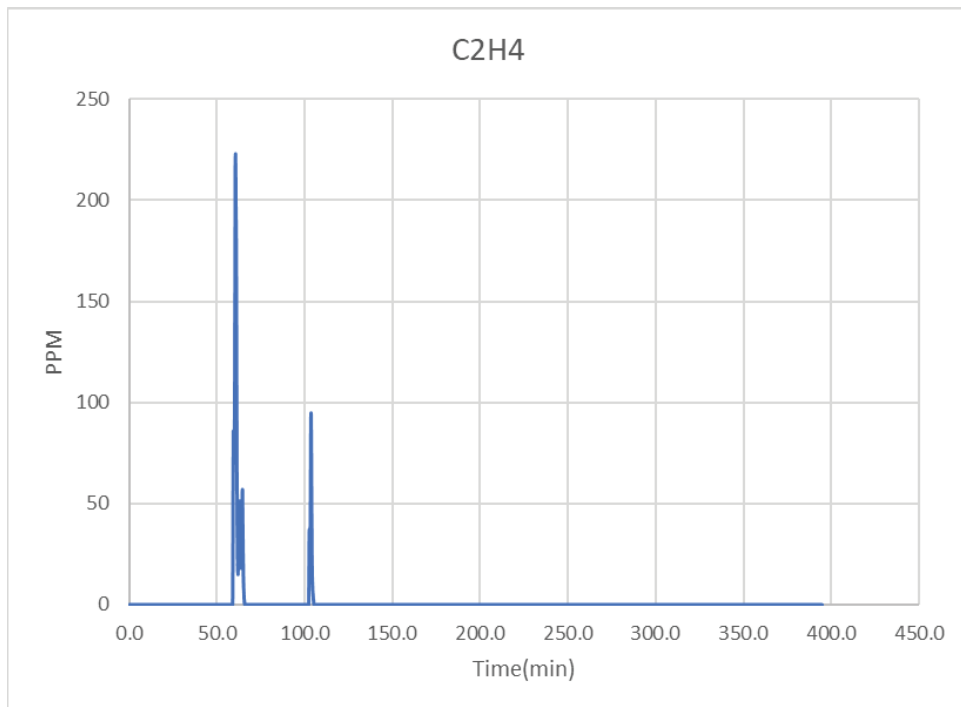
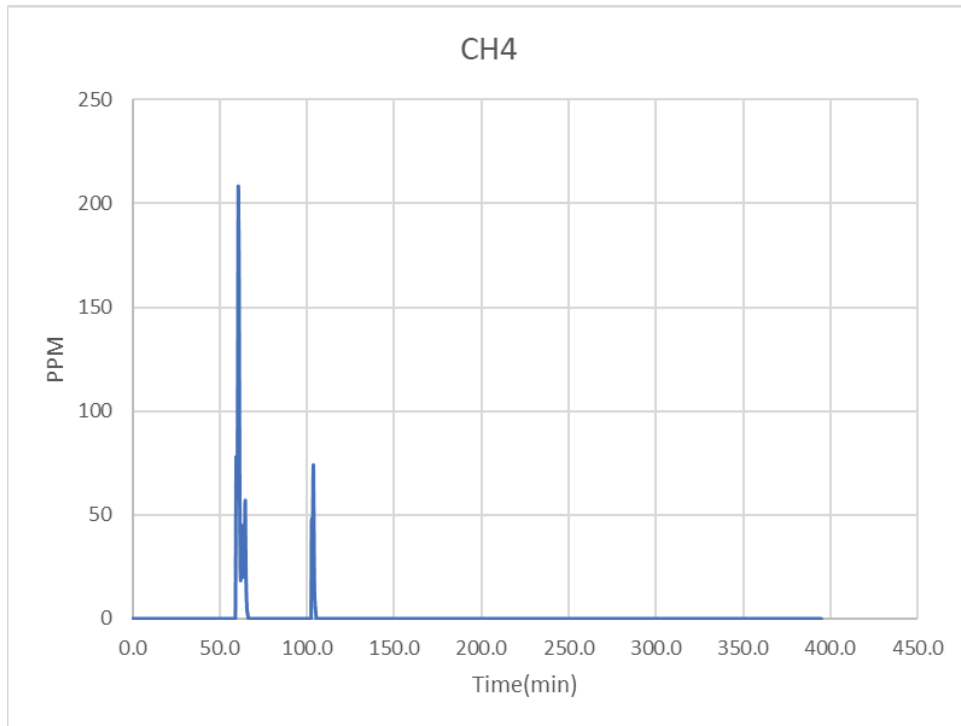
Gas type	Gas components		Total volume of gas (L)
Hydrocarbon species	Methane	CH ₄	44.5
	Ethylene	C ₂ H ₄	47.4
	Ethane	C ₂ H ₆	20.2
Others	Carbon Monoxide NDIR/FTIR	CO	99.7
	Carbon Dioxide NDIR/FTIR	CO ₂	212.6
	Hydrogen (Palladium nickel thin film solid state sensor)	H ₂	Below detectable limit
Total Hydrocarbons (equivalent to CH ₄ , measured by FID)			233.0

3.6.3 Gas components

Concentration of different gas components were present according to gas species classification in Figures 10 to 14. Average flow rate was $1.549 \text{ m}^3/\text{s}$ during test.

Prüfbericht-Nr.: CN248DTM 002
Test report no.:

Seite 22 von 33
Page 22 of 33



Prüfbericht-Nr.: CN248DTM 002
Test report no.:

Seite 23 von 33
Page 23 of 33

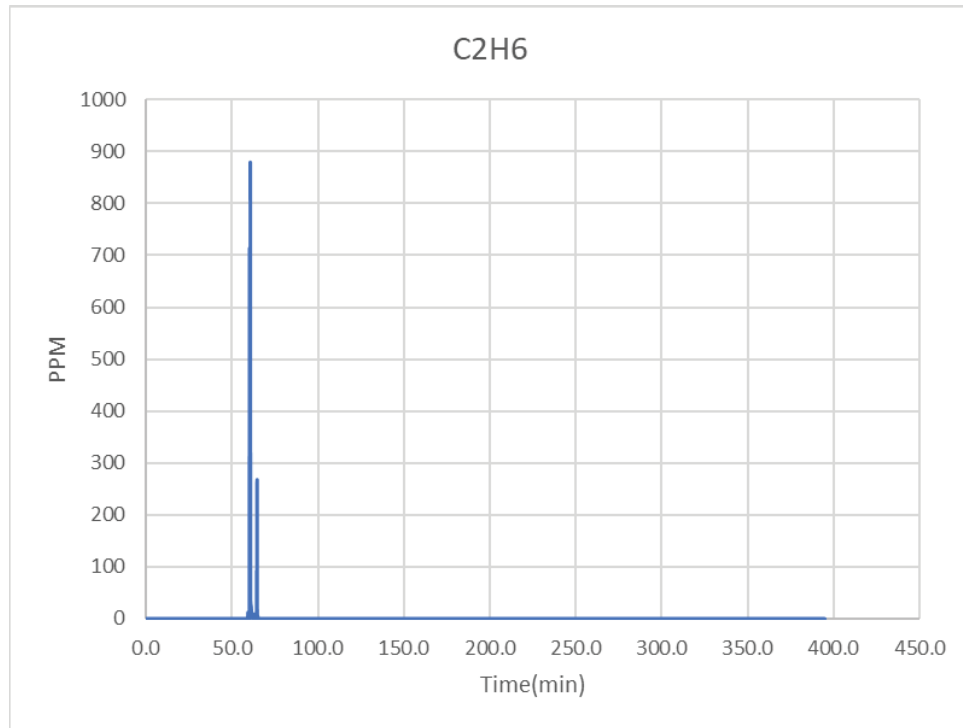
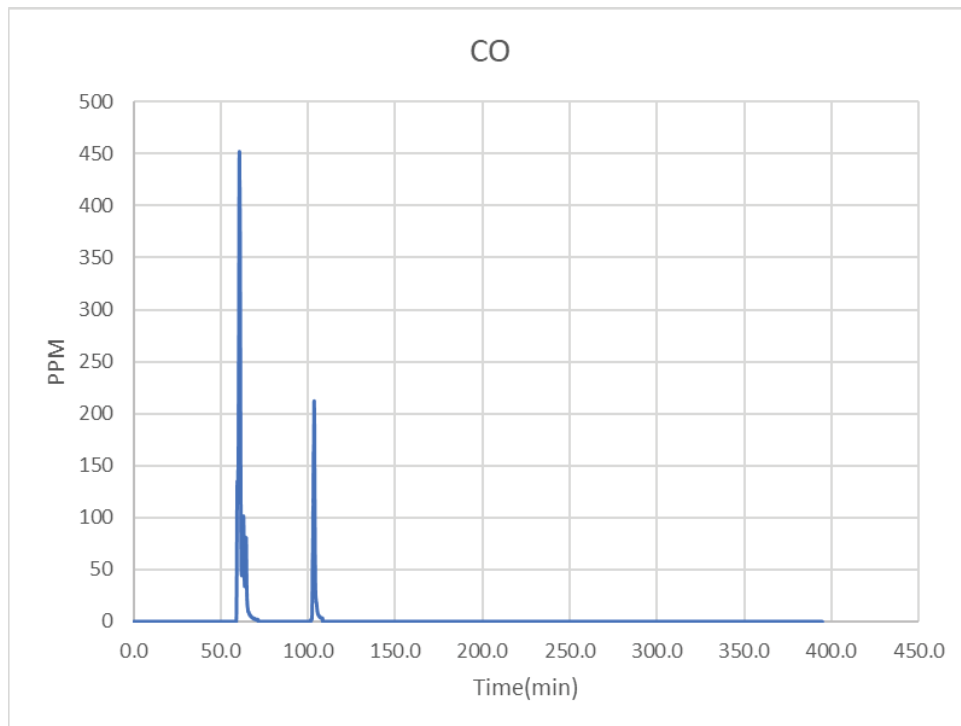


Figure 10. Hydrocarbon species



Prüfbericht-Nr.: CN248DTM 002
Test report no.:

Seite 24 von 33
Page 24 of 33

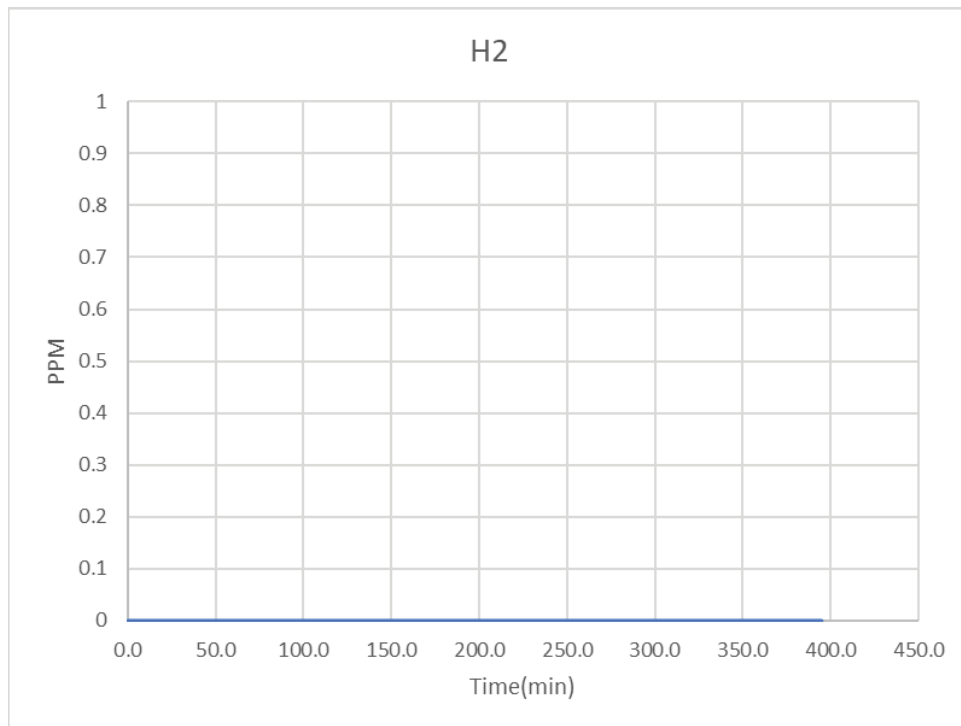
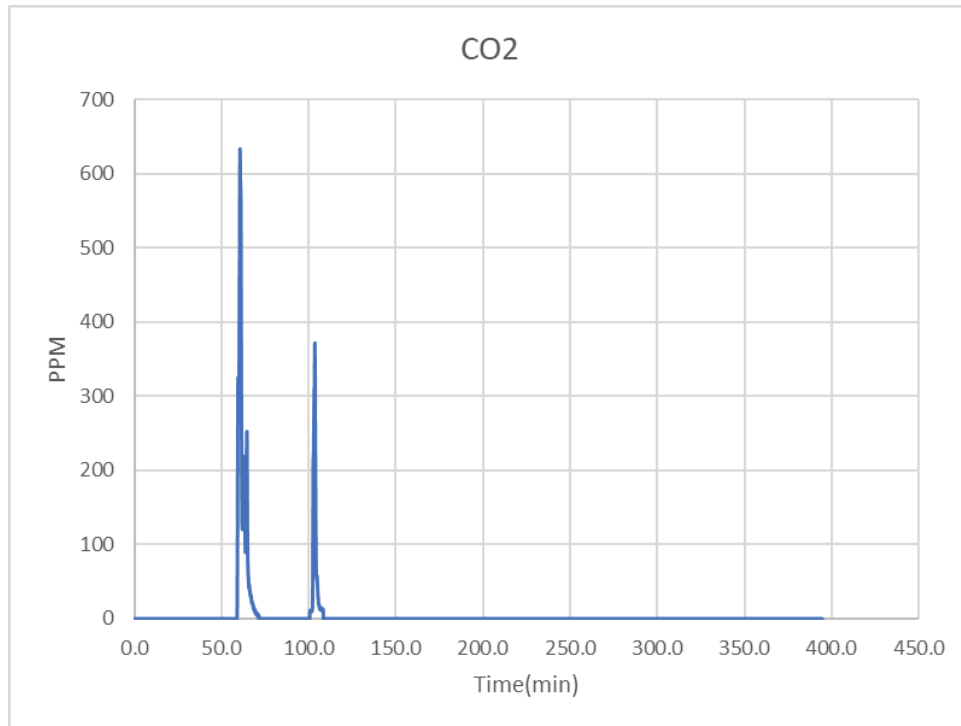


Figure 13. Others

Prüfbericht-Nr.: CN248DTM 002
Test report no.:

Seite 25 von 33
Page 25 of 33

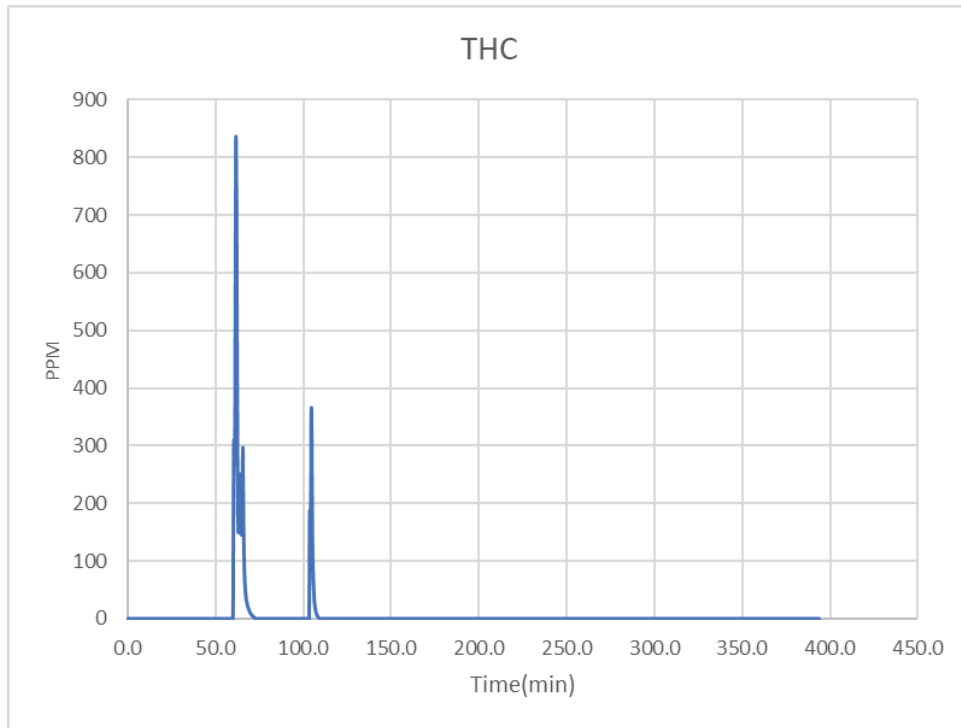
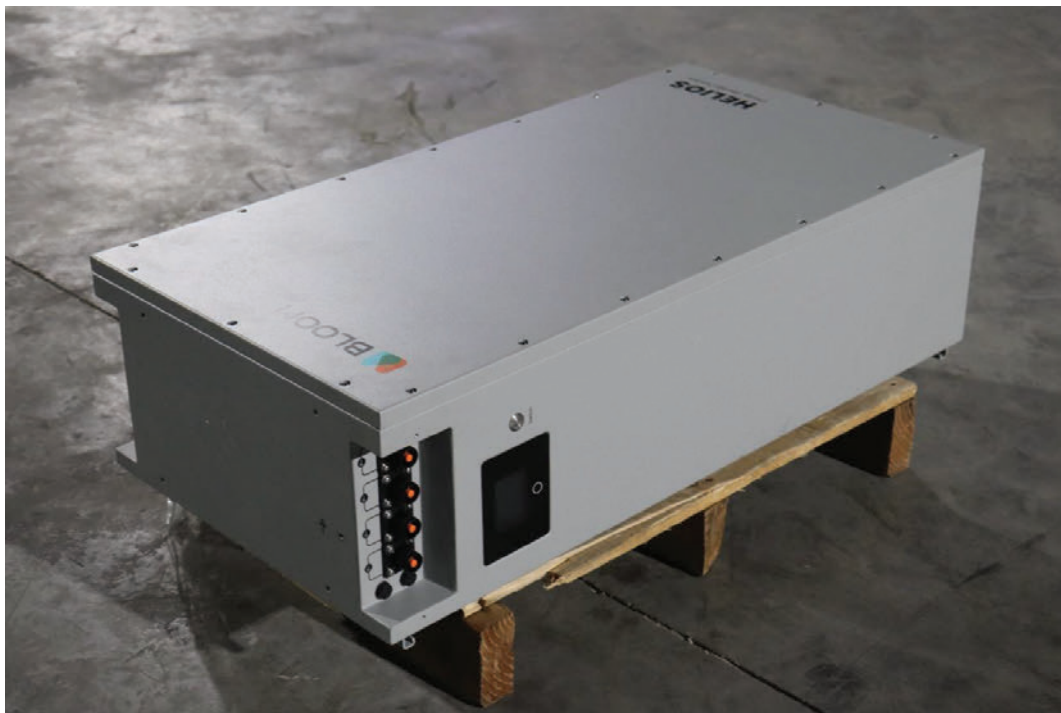
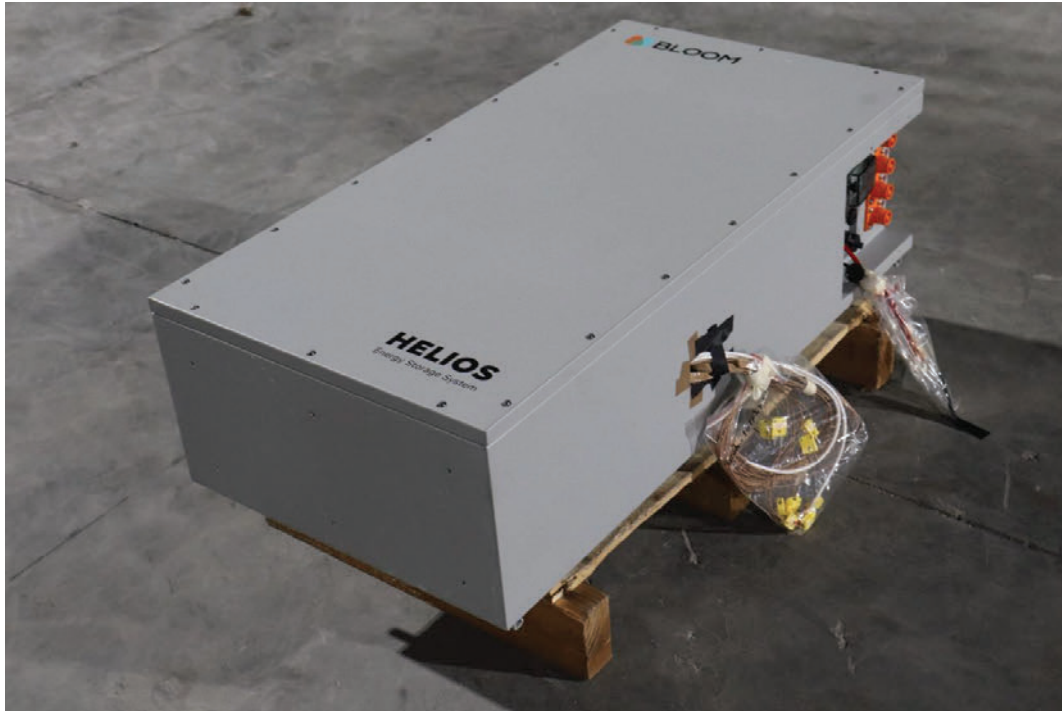


Figure 14. Total Hydrocarbons (equivalent to CH₄, measured by FID)

Prüfbericht-Nr.: CN248DTM 002
Test report no.:

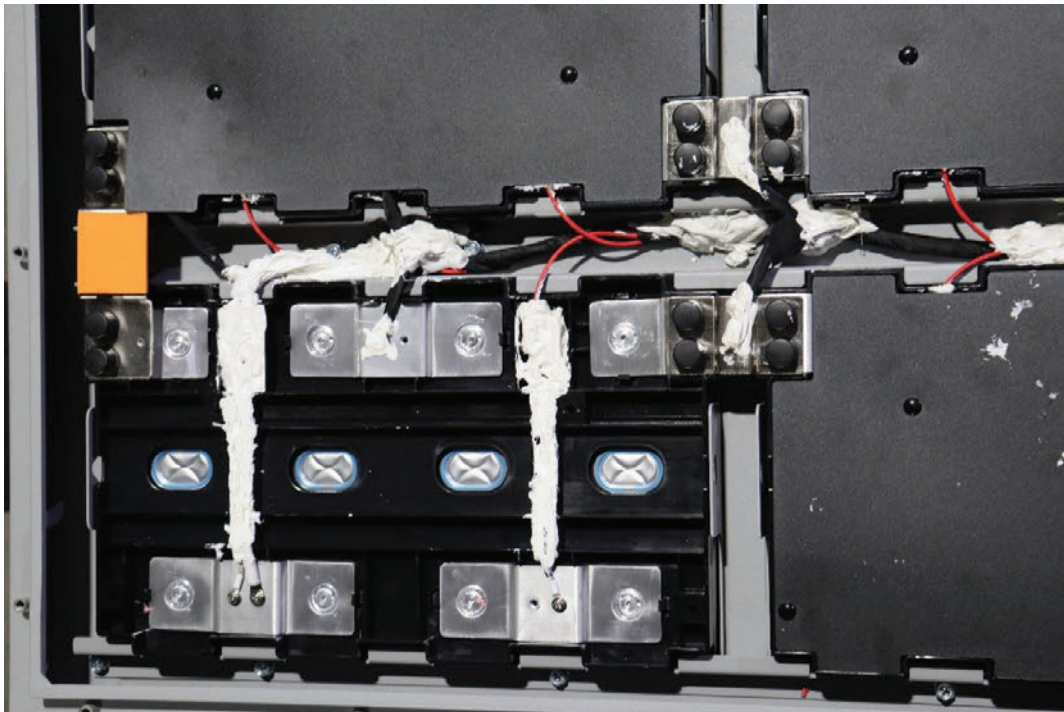
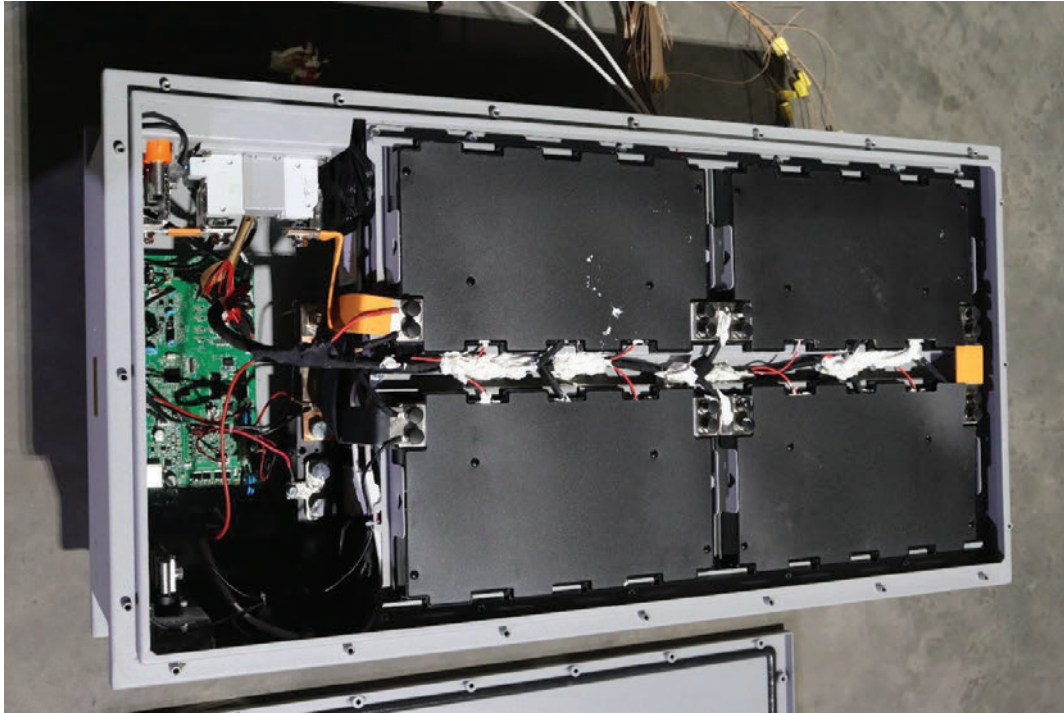
Seite 26 von 33
Page 26 of 33

3.7 Photos



Prüfbericht-Nr.: CN248DTM 002
Test report no.:

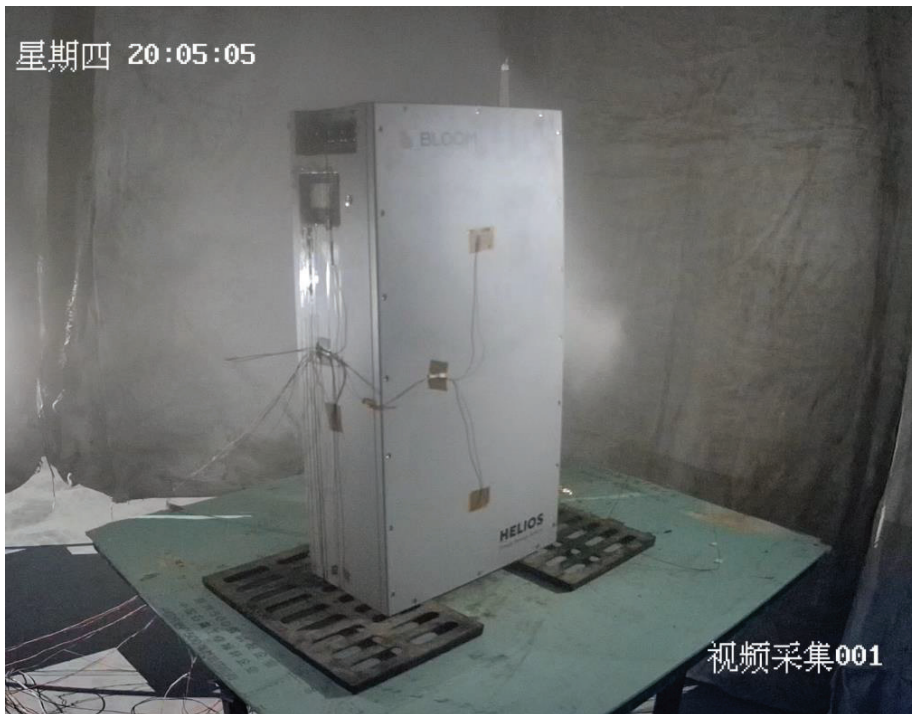
Seite 27 von 33
Page 27 of 33



Module before test

Prüfbericht-Nr.: CN248DTM 002
Test report no.:

Seite 28 von 33
Page 28 of 33



Smoke release during test

Prüfbericht-Nr.: CN248DTM 002
Test report no.:

Seite 29 von 33
Page 29 of 33



Prüfbericht-Nr.: CN248DTM 002
Test report no.:

Seite 30 von 33
Page 30 of 33



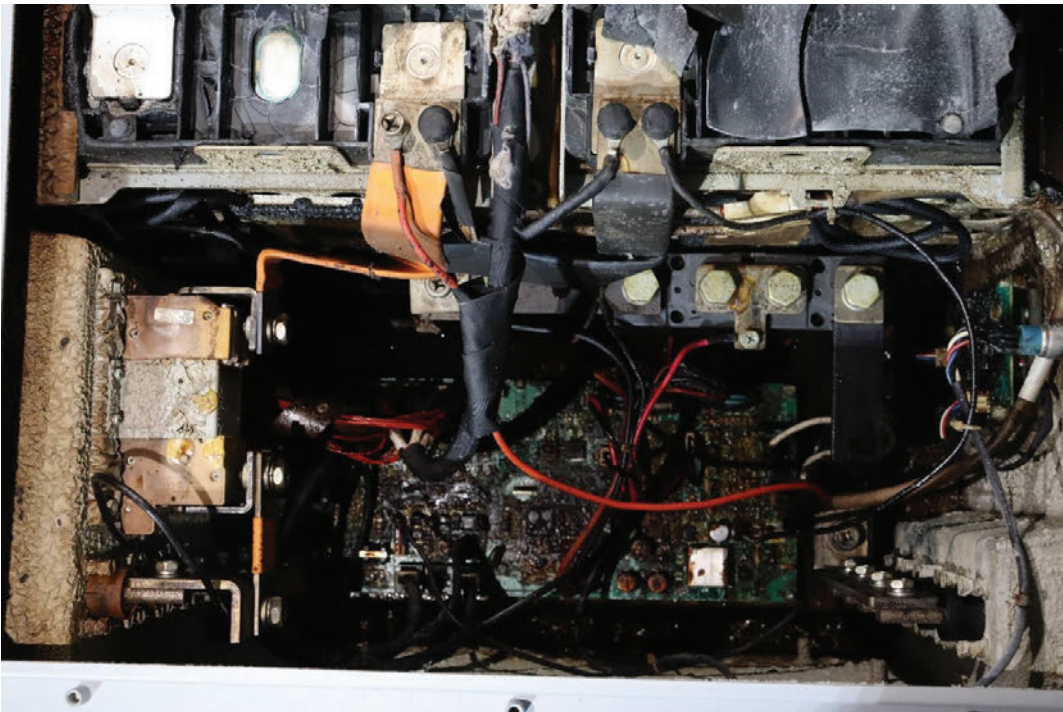
Prüfbericht-Nr.: CN248DTM 002
Test report no.:

Seite 31 von 33
Page 31 of 33



Prüfbericht-Nr.: CN248DTM 002
Test report no.:

Seite 32 von 33
Page 32 of 33



Prüfbericht-Nr.: CN248DTM 002
Test report no.:

Seite 33 von 33
Page 33 of 33



Sample after test

End of Test Report